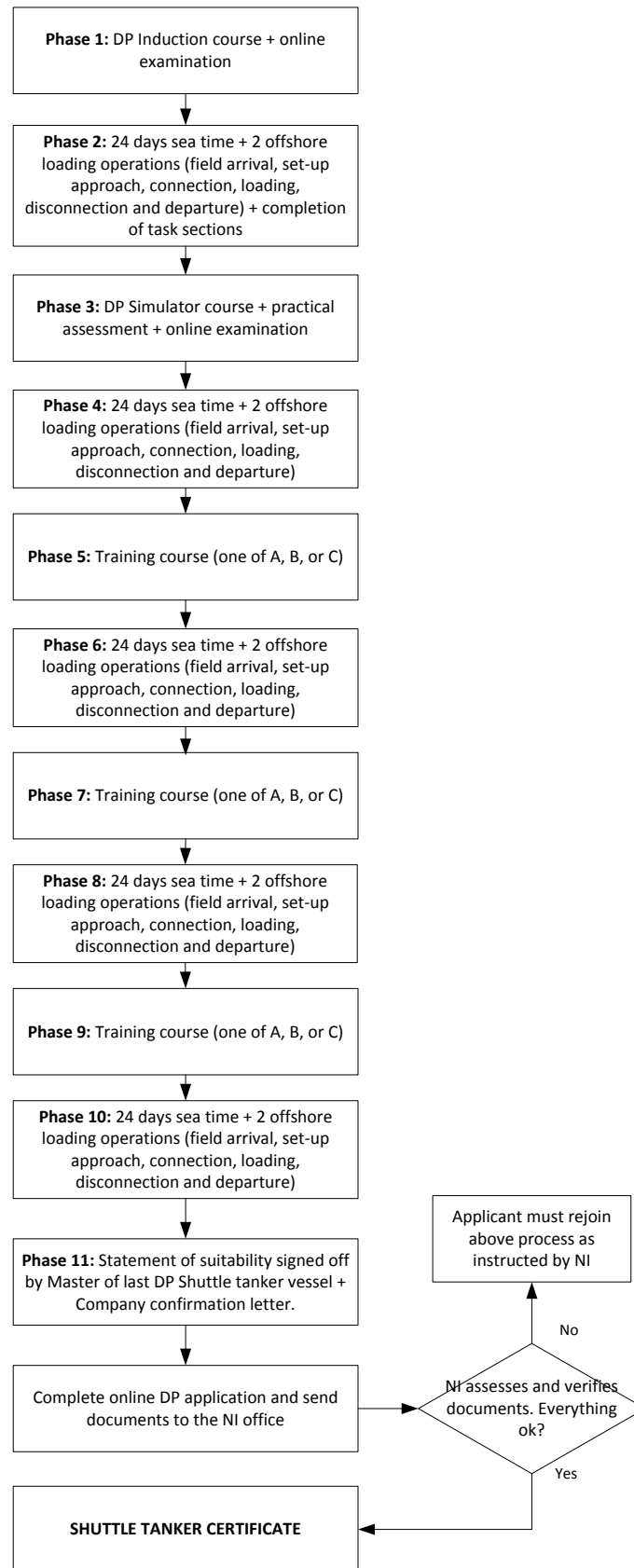


Shuttle Tanker Scheme



REQUIREMENTS FOR SHUTTLE TANKER SCHEME

A Shuttle Tanker Restricted Dynamic Positioning certificate can be issued providing that the applicant meets the NI's requirements. The Shuttle Tanker scheme is for those applicants who started the scheme after 1st January 2015. These applicants will hold the new dark red (burgundy) A5 logbook.

- **PHASE 1 – DP INDUCTION COURSE**

The Induction course should be entered into the Induction course section of the logbook. This must be stamped, signed and dated by the training centre. This date must be within the previous four years to the receipt of the DP application in the NI office. The examination must be passed in order to continue with the scheme.

- **PHASE 2 – 24 DAYS SEATIME + 2 OFFSHORE LOADING OPERATIONS**

24 days sea time is required for the Phase 2 section. This should be completed on a DP classed vessel and be stamped and signed by the master of the vessel. This time must be completed after the Basic course. Please note that the day's sea time is counted differently to the Offshore scheme. The vessel must be on DP for the offshore loadings and the phase is only complete when both the 24 days sea time and the offshore loading operations are completed (field arrival, set-up approach, connection, loading, disconnection and departure). If only one offshore loading operation is completed in the 24 days sea time, additional time must be spent onboard to obtain the second offshore loading operation before moving to the next phase.

During this phase, all items in the Task section of the logbook must also be completed. The applicant will not be permitted to attend the Simulator course until all tasks have been completed.

- **PHASE 3 – DP SIMULATOR COURSE**

The Simulator course should be entered into the Simulator course section of the logbook. This must be stamped, signed and dated by the training centre. This date must be within the previous four years to the receipt of the DP application in the NI office.

- **PHASE 4 – 24 DAYS SEATIME + 2 OFFSHORE LOADING OPERATIONS**

24 days sea time is required for the Phase 4 section. This should be completed on a DP classed vessel and be stamped and signed by the master of the vessel. This time must be completed after the Basic course. Please note that the day's sea time is counted differently to the Offshore scheme. The vessel must be on DP for the offshore loadings and the phase is only complete when both the 24 days sea time and the offshore loading operations are completed (field arrival, set-up approach, connection, loading, disconnection and departure). If only one offshore loading operation is completed in the 24 days sea time, additional time must be spent onboard to obtain the second offshore loading operation before moving to the next phase.

- **PHASE 5 - TRAINING COURSE (ONE OF A, B, OR C)**

- A. COURSE A: One or two day training courses provided by the manufacturers of position reference systems. These courses are recognised, not accredited, by the NI.
- B. COURSE B: This is a 5 day simulator training course with a total of 30 hours of instruction that concentrates on shuttle tanker specific behaviours and includes exercises for a range of offshore loading installation types. This course is accredited by the NI.
- C. COURSE C: This is a 5 day simulator training course with a total of 37.5 hours of instruction. The course is similar to the STR course but requires that the exercises are not done in

Shuttle Tanker operations. Unlike the STR course, there is no reduction of DP sea time requirements as a result of this course. This course is accredited by the NI.

- **PHASE 6 – 24 DAYS SEATIME + 2 OFFSHORE LOADING OPERATIONS**

24 days sea time is required for the Phase 6 section. This should be completed on a DP classed vessel and be stamped and signed by the master of the vessel. This time must be completed after the Basic course. Please note that the day's sea time is counted differently to the Offshore scheme. The vessel must be on DP for the offshore loadings and the phase is only complete when both the 24 days sea time and the offshore loading operations are completed (field arrival, set-up approach, connection, loading, disconnection and departure). If only one offshore loading operation is completed in the 24 days sea time, additional time must be spent onboard to obtain the second offshore loading operation before moving to the next phase.

- **PHASE 7 – TRAINING COURSE (ONE OF A, B, OR C NOT ALREADY COMPLETED)**

- A. COURSE A: One or two day training courses provided by the manufacturers of position reference systems. These courses are recognised, not accredited, by the NI.
- B. COURSE B: This is a 5 day simulator training course with a total of 30 hours of instruction that concentrates on shuttle tanker specific behaviours and includes exercises for a range of offshore loading installation types. This course is accredited by the NI.
- C. COURSE C: This is a 5 day simulator training course with a total of 37.5 hours of instruction. The course is similar to the STR course but requires that the exercises are not done in Shuttle Tanker operations. Unlike the STR course, there is no reduction of DP sea time requirements as a result of this course. This course is accredited by the NI.

- **PHASE 8 – 24 DAYS SEATIME + 2 OFFSHORE LOADING OPERATIONS**

24 days sea time is required for the Phase 8 section. This should be completed on a DP classed vessel and be stamped and signed by the master of the vessel. This time must be completed after the Basic course. Please note that the day's sea time is counted differently to the Offshore scheme. The vessel must be on DP for the offshore loadings and the phase is only complete when both the 24 days sea time and the offshore loading operations are completed (field arrival, set-up approach, connection, loading, disconnection and departure). If only one offshore loading operation is completed in the 24 days sea time, additional time must be spent onboard to obtain the second offshore loading operation before moving to the next phase.

- **PHASE 9 - TRAINING COURSE (ONE OF A, B, OR C NOT ALREADY COMPLETED)**

- A. COURSE A: One or two day training courses provided by the manufacturers of position reference systems. These courses are recognised, not accredited, by the NI.
- B. COURSE B: This is a 5 day simulator training course with a total of 30 hours of instruction that concentrates on shuttle tanker specific behaviours and includes exercises for a range of offshore loading installation types. This course is accredited by the NI.
- C. COURSE C: This is a 5 day simulator training course with a total of 37.5 hours of instruction. The course is similar to the STR course but requires that the exercises are not done in Shuttle Tanker operations. Unlike the STR course, there is no reduction of DP sea time requirements as a result of this course. This course is accredited by the NI.

- **PHASE 10 – 24 DAYS SEATIME + 2 OFFSHORE LOADING OPERATIONS**

24 days sea time is required for the Phase 10 section. This should be completed on a DP classed vessel and be stamped and signed by the master of the vessel. This time must be completed after the Basic course. Please note that the day's sea time is counted differently to the Offshore scheme. The vessel must be on DP for the offshore loadings and the phase is only complete when both the 24 days sea time and the offshore loading operations are completed (field arrival, set-up approach, connection, loading, disconnection and departure). If only one offshore loading operation is completed in the 24 days sea time, additional time must be spent onboard to obtain the second offshore loading operation before moving to the next phase.

- **PHASE 11 – STATEMENT OF SUITABILITY FORM**

A Statement of Suitability form must be completed after the final days sea time and offshore loading operations have been completed. This form can be downloaded from the NI website.

The Master of the last vessel needs to sign the Statement of Suitability form. The applicant must also sign this form. The signatures on the Section F form will be checked against the final sea time days and Offshore loading operation recorded in the logbook and also the PDF application form.

Please note that if the applicant is the Master of the vessel, the Statement of Suitability form must be signed off by one of the following authorised personnel:

- The vessel Relief Master
- A certified DPO onboard (DP certificate number to be noted on form)
- A Marine Superintendent/Manager who is aware of the applicants DP capabilities

A note should also be made and submitted with the application to explain.

Scanned or photocopies versions of this form cannot be accepted.

- **CONFIRMATION LETTERS**

For all applications, company letters confirming the sea time days and the offshore loading operations must be provided for any time to be used as part of the application for a Shuttle Tanker Restricted Dynamic Positioning certificate.

APPLICATION FOR CERTIFICATE

Once the above requirements have been completed in order, the applicant will need to apply online for the certificate. The applicant must now apply using their email address as their user ID. If this is not known, the applicant will need to contact the DP department for the login details. As the scheme requires the applicant to complete the examination at the training centre, an account will be held by all applicants.

Once logged in on the NI website, the applicant should update any personal details which may have changed and select the correct scheme to start applying. The details from the logbook should be added to the online application system. Once the online application has been completed, the system will show whether the applicant is eligible for a certificate. The payment can then be made and the application and supporting documents can be sent into the NI office for processing.

Please note that all applications are subject to verification once they are received by The Nautical Institute.